

SHERBURN-IN-ELMET

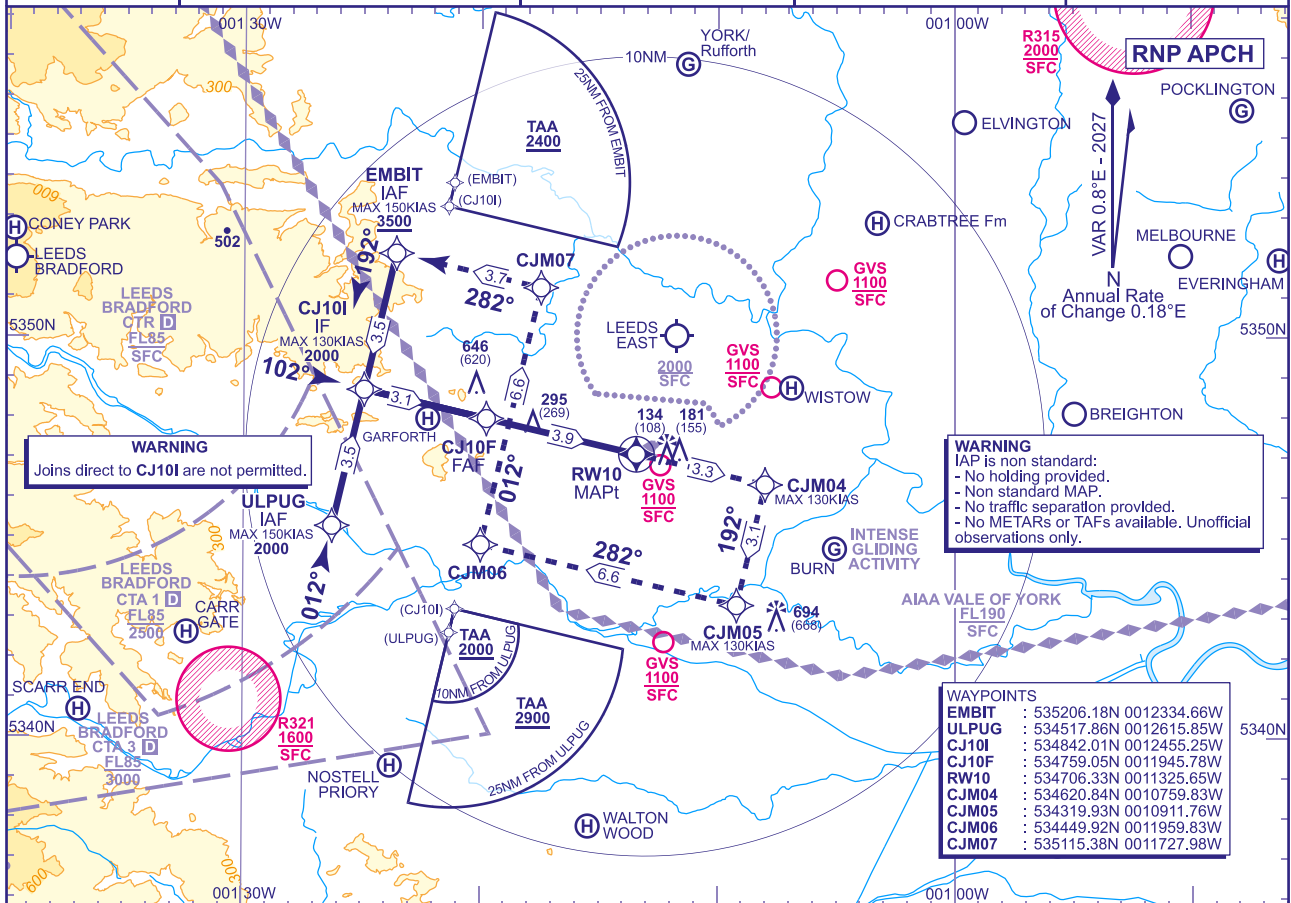
RWY 10

(ACFT CAT A,B)



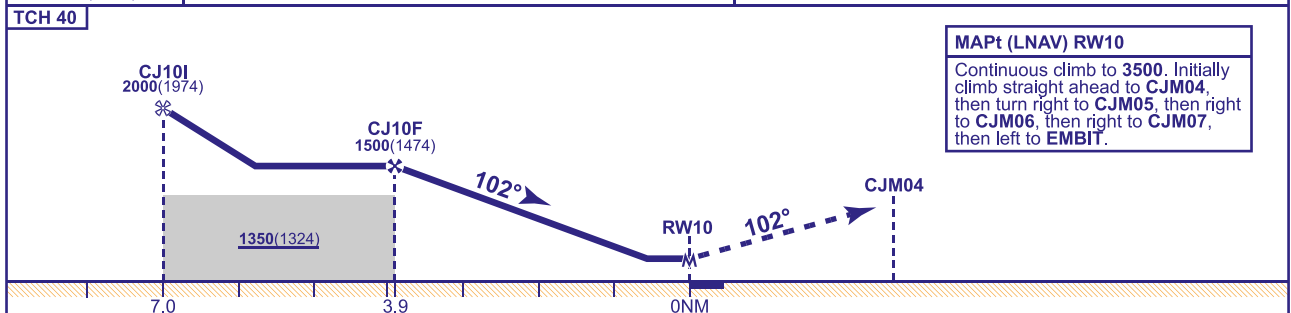
A/G	122.610	SHERBURN RADIO	AD ELEVATION	26
			THR ELEVATION	26
			OBSTACLE ELEVATION	
			694 AMSL	
			(668) (ABOVE THR)	
			BEARINGS ARE MAGNETIC	

TRANSITION ALTITUDE
3000



RECOMMENDED PROFILE Gradient 6.12%, 372FT/NM

NM to RW10	3	2
ALT(HGT)	1180(1154)	810(784)



Aircraft Category		A	B	Rate of descent	G/S KT	160	140	120	100	80
OCA (OCH)	LNAV	550(524)	550(524)		FT/MIN	990	870	740	620	500
VM(C)OCA (OCH AAL)	Total Area	630(604)	630(604)							

NOTE 1 CAUTION: Procedure lies close to Leeds CTA/CTR. Aircraft not in receipt of a zone transit clearance must remain clear.

2 CAUTION: Proximity of Leeds East Airport, 3NM to the North.

CHANGE (1/26): MAG VAR REVISED. MAG HEADINGS.

AERO INFO DATE 05 NOV 25

AD 2-EGCJ-8-1